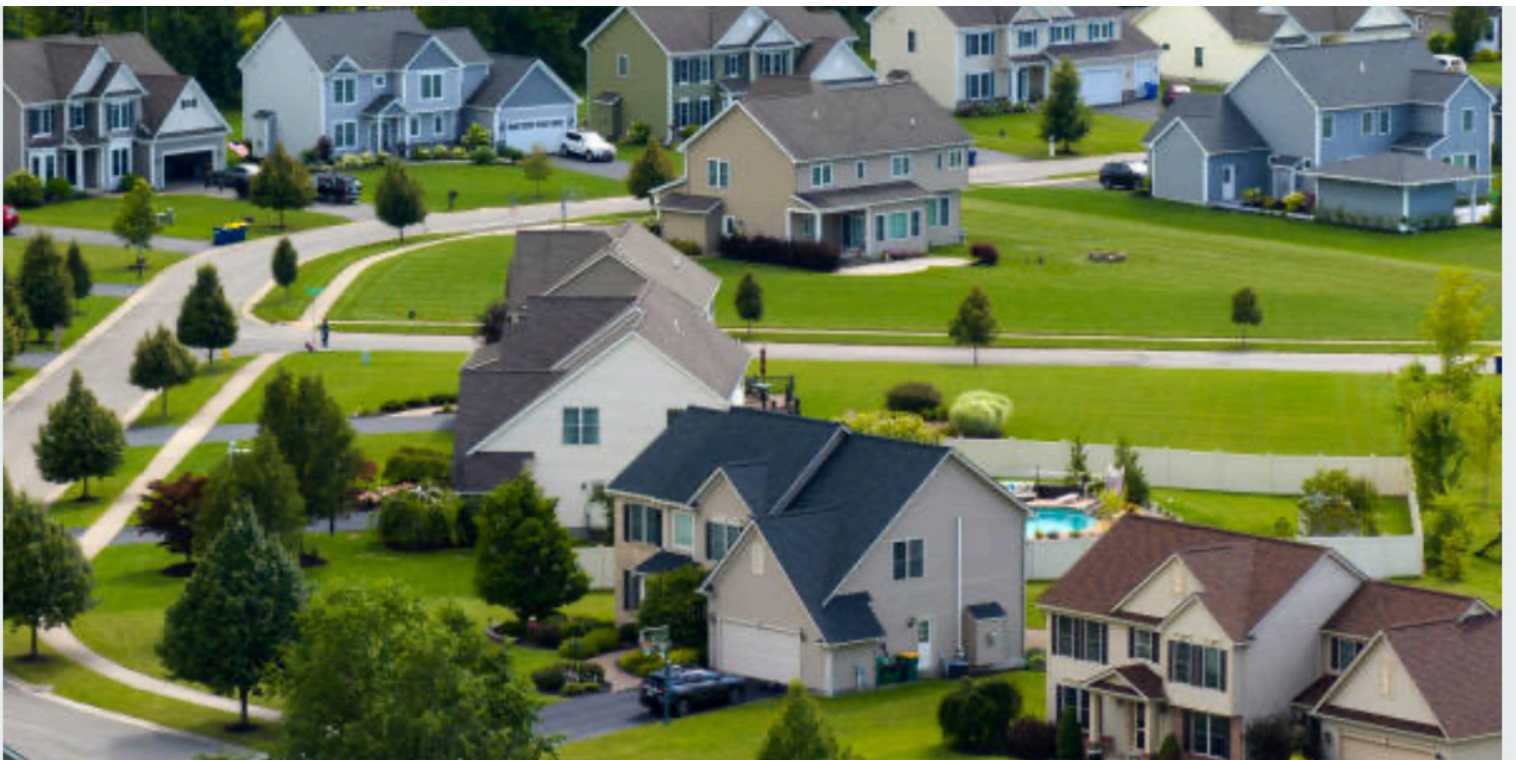


Our Housing Model



Home With A Mission
The Power of Housing to Change Lives

Coming home to a safe and secure home is the first step to a fresh start. A stable home is a safe haven.



Family is not only blood relations but a family can be group of people living together in bliss and helping each other live a fulfilled life.

We believe in the power of housing to change lives. At Home with a Mission, we strive to uphold this belief. We want to play a part in someone's **restoration** and **rebuilding** of dreams and shaping new ambitions. Our program members come through our doors from all walks of life with varying ages and experiences but all are on their way to recovery. Each one gaining greatly from a **supportive and shared living environment**, located in **family-oriented** communities.

Our unique housing model puts safety, stability and mutual respect as the top priority. We house our program members in lovely single-family homes in desirable neighborhoods to promote an atmosphere of community and a place to belong. We pay attention to our intention of facilitating recovery. This is what makes us different from most recovery housing.

Research has shown how challenging it can be to succeed in recovery when someone is pushed back into the same old crippling conditions. Our program members are guided by

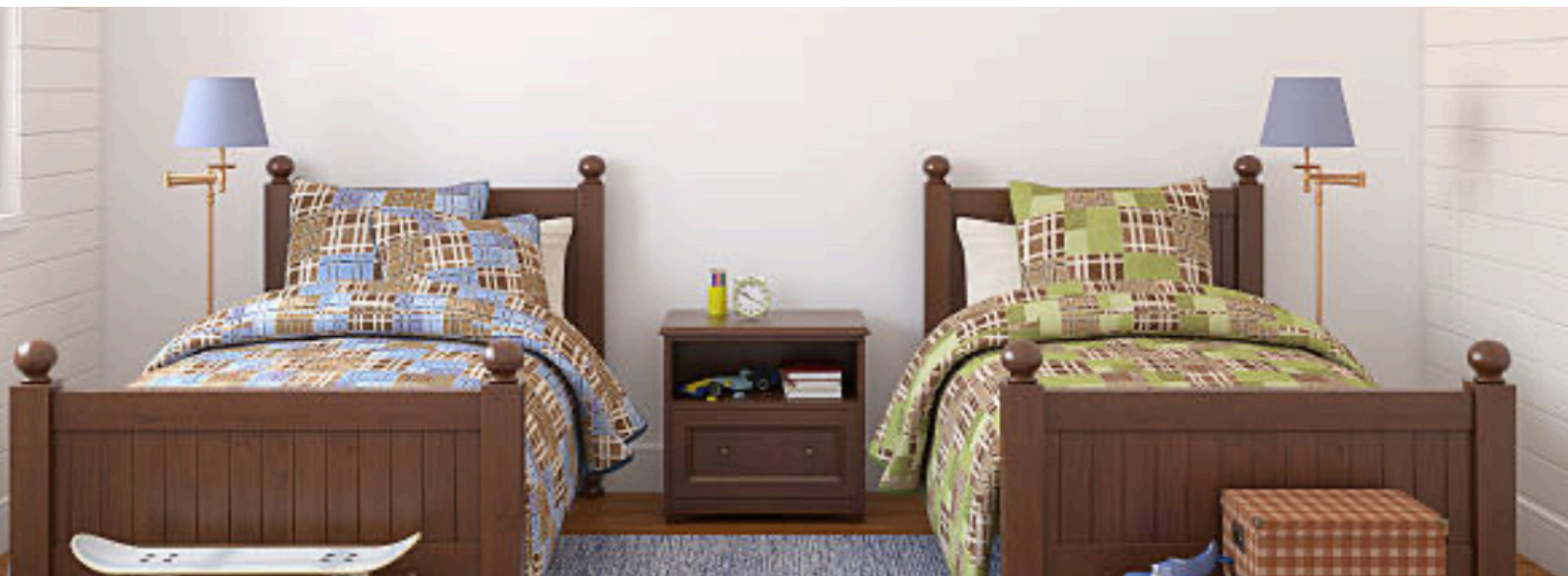
our **Core Values** and put them into practice through our **House Rules**, our **Good Neighbor Policy** and taking part in **Daily Chores**.

Our homes are **strategically located** to access public transportation, employment/education opportunities. We collaborate with local partners including supportive service agencies, medical services, peer support, counseling, and treatment centers support a successful and sustained recovery. We support dual diagnosis of addiction and depression.

Living drug and alcohol free, personal accountability, respect, and maintaining a harmonious home is a requirement. It is our responsibility to establish a peaceful and tranquil environment inside and outside the home. Our **no-visitor policy** guarantees each member's safety and personal privacy. We put our best foot forward to eliminate negative stereotypes and **break the stigma** associated with our target demographics.

We have huge expectations from our members. A lifestyle of addiction draws one away from community and isolation is a barrier to a successful recovery path. More than half of recovery has to something to do with learning to become at ease around others while learning to love oneself at the same time. We offer **community-based** living with shared bedrooms, with emphasis on the importance of accountability and support for one another while in recovery. Our model builds on the element of **supportive social network** that has been proven invaluable and effective to encourage a lifestyle of abstinence and success in recovery.

OUR HOME FURNISHINGS



- Furnished common areas, bedrooms and outdoor gathering areas
- All kitchen & laundry appliances
- All houseware for preparing, cooking and storing meals.
- Small personal safes for valuables/medications
- Underbed storage containers for personal items
- Keypad entry locksets & exterior security cameras
- Home office with desk, chair, computer, printer
- Smart TV with streaming services available

OUR PROGRAM PROVIDES



- A Welcome Kit for all new program members containing essential personal toiletries, bed & bath linens
- Initial household supplies i.e., toilet paper, paper towels, laundry and cleaning supplies, etc. (program members will contribute to the purchase of inventory resupply after 30 days)
- All Utilities, Internet/Wi-Fi
- Onsite clothing bank
- A comprehensive list of contacts for local support services
- A coordinated schedule rotating the selection of House/Peer Support Lead from program members residing in the home
- Enforcement of pre-determined and agreed upon House Rules, SFF Policies to provide a synergistic living environment
- A safe, secure, tranquil, supportive, respectful environment where all program members thrive in their journey.

Program Fees



- Program fees are \$200/week per program participant.
- One-time, nonrefundable Intake/Admin fee is \$350.

- All house program members will be given a portal login from which they can pay their Program fees weekly.
- Debit cards and/or Zelle are the preferred payment method. We do NOT accept cash, checks or credit cards.
- Monthly supplies fee not to exceed \$25/month per member. Perishable items for example paper towels, toilet paper, dish soap, cleaning supplies, laundry detergent, etc.
- Refund Policy: If House Rules are broken or you are asked to leave, there is no refund.

Home with a Mission is Level II MAT Housing

We accept people on suboxone, methadone, and drugs to support mental health

Name	Contact Information
Christine Francisco	336-971-9505 info@ahomewithmission.org